

Instructions to join Discord

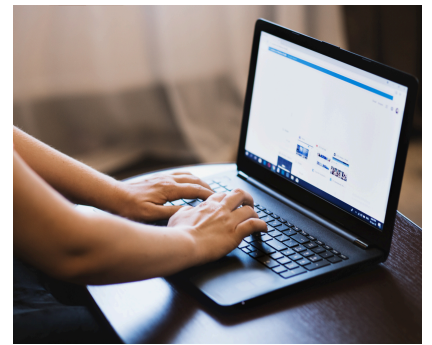


FOR NEW GRANVISIO MEMBERS



Table of Contents

- | | |
|---------------------------|----------------------------------|
| I. Registering on Discord | IV. Navigating and Using Discord |
| II. Logging into Discord | V. Basic Commands and Features |
| III. Joining Our Server | VI. Etiquette and Rules |



Registering on Discord

- 1. Download Discord:** If you haven't already, download the Discord app on your device. It's available for Windows, macOS, iOS, Android, and Linux. Alternatively, you can use Discord directly from your web browser by visiting discord.com.
- 2. Create an Account:**
 - Open the Discord app or website.
 - Click on the "Register" button.
 - Enter your email address, choose a username, set a strong password, and your date of birth.
 - Accept the Terms of Service and Privacy Policy.
 - Click "Continue".
 - Verify your email by clicking the verification link sent to your inbox.

Logging into Discord

1. **Open Discord:** Launch the Discord app or go to the [Discord website](#).
2. **Login:**
 - Click on the "Login" button.
 - Enter your registered email and password.
 - Click "Login" again.



Invitation Link

Click on the invitation link you received in the email. If you haven't received one, please send an email to: **members@join.granvisio.com**

Accept the Invite

When prompted, click "Join" to enter our community server.

Navigating and Using Discord

Our server has various channels dedicated to different topics. Here's a quick overview:

Channels

Text Channels

These are for text-based conversations. Simply click on a channel to view and participate.

Voice Channels

These allow for voice chat. Click on a voice channel to join the conversation.

Responding and Posting

You can directly respond to existing posts in a channel by typing your message in the text box at the bottom and hitting enter. To start a new discussion, make sure to post in the relevant channel to keep conversations organized. For example, any queries regarding plant guilds in the #food-forest channel and general chat in the #general chat-channel.

Events

We regularly host events such as Q&A sessions, and more. Keep an eye on the #events channel for announcements and details about upcoming activities. Participating in these events is a great way to get involved and meet other members of the community.

Basic Commands and Features

- **@Mentions:** Use @username to mention someone specific. They will receive a notification.
- **Direct Messages (DMs):** Click on a member's name and select "Message" to start a private conversation.
- **Reactions:** Hover over a message and click the emoji icon to react with emojis.
- **Roles:** Roles are assigned to categorize and manage channel permissions. If you paid for Premium Membership and don't have access to Premium channels, contact us immediately.



Etiquette and Rules

- Be respectful and considerate to all members.
- Follow the server rules as indicated in #rules channel, and specific rules as outlined in the channel descriptions or pinned messages.
- If you encounter any issues or need assistance, feel free to reach out to admin.

Thank you for being part of our community. We look forward to engaging with you and creating a vibrant and supportive environment. If you have any questions or need further assistance, please don't hesitate to contact us!

Welcome aboard!

Eva Maria Lesiak

Permaculture Designer & Consultant

Granvisio Members

For inquiries, contact us.

Website

join.granvisio.com

Email

members@join.granvisio.com

